

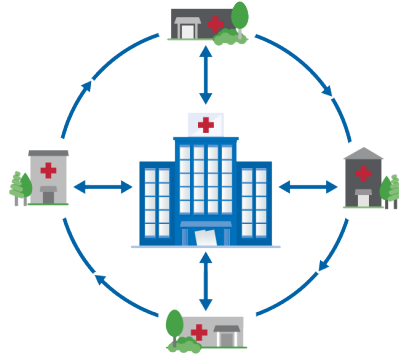


In the US infants and children are not getting access to the emergency care they need, when they need it, for complex and treatable conditions.

Emergency medicine providers have limited access to pediatric resources in a way that allows them to provide optimal care.

Moving Knowledge, Not Participants

Through technology-enabled collaborative learning, ECHO creates access to pediatric emergency medicine education and resources for community ED providers.



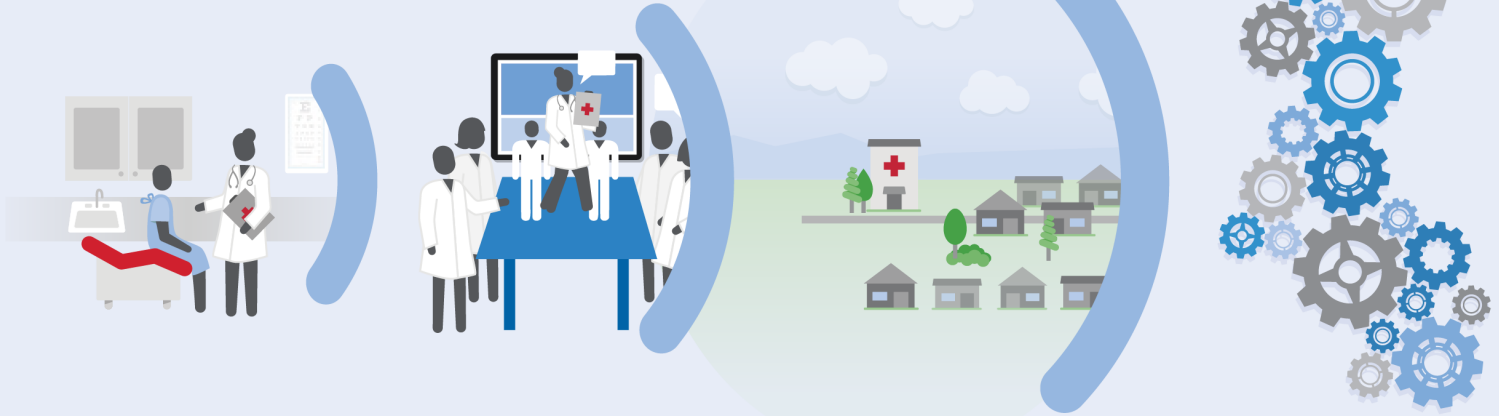
Hub and spoke knowledge-sharing networks create a learning loop:

Healthcare professionals learn from pediatric and ED experts.

Healthcare professionals learn from each other.

Pediatric experts learn from community ED healthcare providers.

Doing more for Ill and Injured Infants and Children in CT Emergency Departments



PATIENTS

- Right Care
- Right Place
- Right Time

PROVIDERS

- Acquire New Knowledge
- Treat More Patients
- Build Community of Practice

COMMUNITY

- Reduce Disparities
- Retain Providers
- Keep Patients Local

SYSTEM

- Increase Access
- Improve Quality
- Reduce Cost

Changing the World, Fast



NEW MEXICO

- More than 300 community clinic sites
- 77,000 CME credits provided for free via ECHO-operated clinics



NATIONAL

- Operating in 30 states and growing
- 45 complex conditions



GLOBAL

- Operating 86 hubs in more than 13 countries and growing
- Goal of touching 1 billion lives by 2025

**Interested in CT EMSC ECHO?
STARTING NOVEMBER 2018**

Contact: cristina.carusone-biceglia@yale.edu